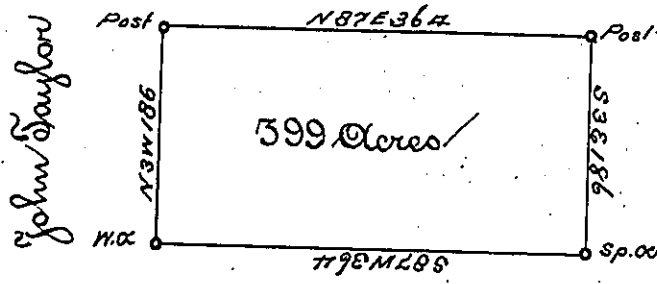


James Banley & Daniel Kewy



K. Cobb. bridge Miller

The above is a draught of a survey made the 15<sup>th</sup> day of November 1895 in pursuance of a Warrant granted to George Kewy dated the 18<sup>th</sup> day of March 1894 situated on the Freshansock branch of Beaver Creek on the Waters thereof in the <sup>2nd</sup> ~~1st~~ <sup>second</sup> Donation District in Allegheny County containing three hundred and ninety nine acres and allowance of <sup>(old)</sup> per Centum to be called Followfield.

Daniel Brodhead Esq  
Surveyor Genl

Thomas Stokely  
D. D.

IN TESTIMONY that the above is a copy of the original remaining on file in the Department of Internal Affairs of Pennsylvania, made conformably to an Act of Assembly approved the 16th day of February, 1833, I have hereunto set my Hand and caused the Seal of said Department to be affixed at Harrisburg, this

twentieth day of December 1894.

*[Signature]*  
Secretary of Internal Affairs.